



ROUZATHUL ULOOM ARABIC COLLEGE



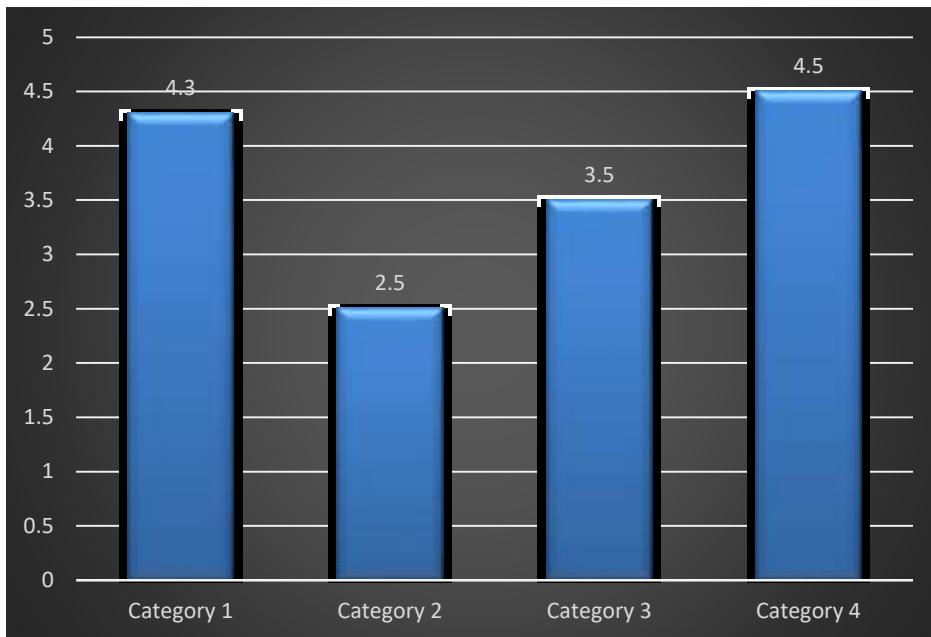
EMPLOYER
FEEDBACK

EMPLOYER FEEDBACK ANALYSIS

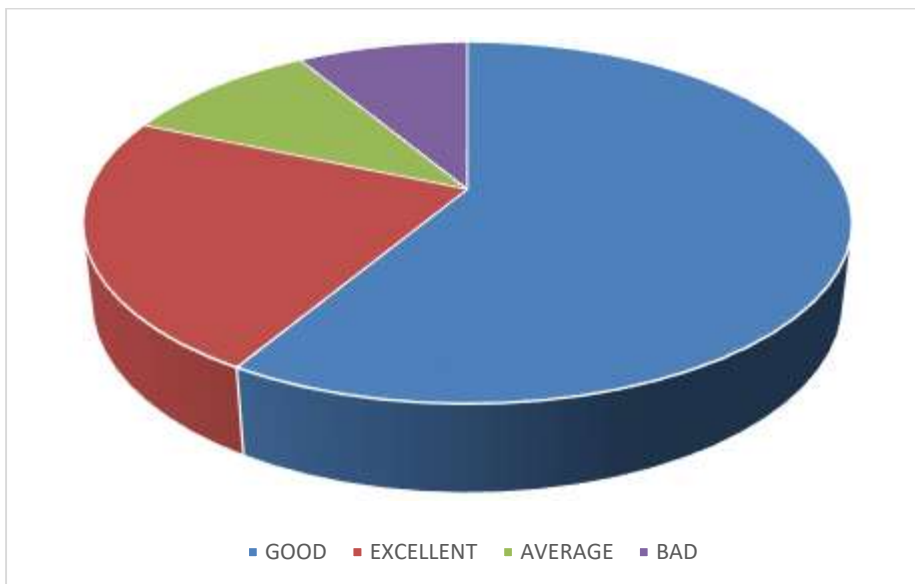
REPORT

2018-2019

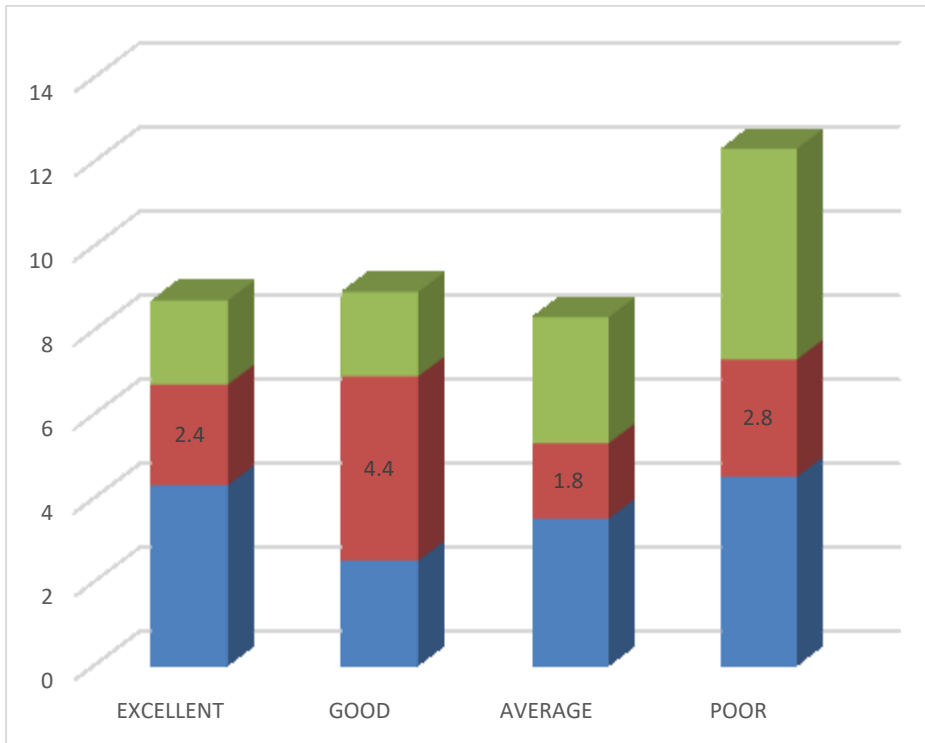
Employee learning outcome and the courses are applicable to organization



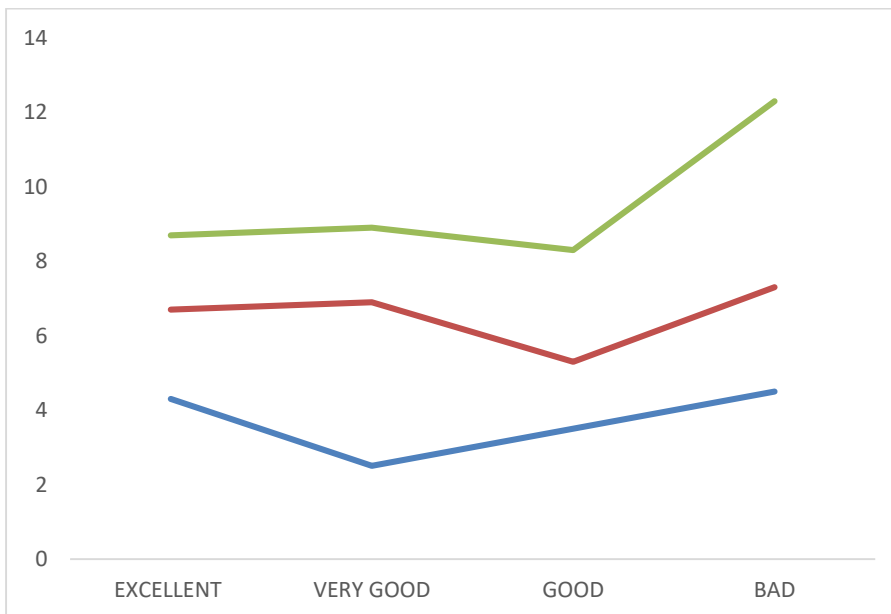
Curriculum aid in the development of personal progress in the direction of employee career



How would you assess the importance to the industry?



How would you grade the effecting offering in terms of technical advancement?



How would you grade the employee's competencies in relation to course outcome?



Rate the curriculum capacity to ensure learners overall development

