



ROUZATHUL ULOOM ARABIC COLLEGE



EMPLOYER FEEDBACK



SHAHAD BIN ALY
PEN. 458879

Assistant Professor
In charge of **PRINCIPAL**
Rouzathul Uloom Arabic College
Farooq College (RC) Haddamuda-211631

EMPLOYER FEEDBACK ANALYSIS
REPORT
2022-2023



SHAHAD BIN ALY
PEN. 468879
Assistant Professor
In charge of **PRINCIPAL**
Reuzathul Ulloom Arabic College
Farook College RD, Kozhikode-673632

INTRODUCTION

Internal quality assurance cell of RUAC took feedback from employers regarding the former students of our college who placed in various reputed institutions under different job positions. It's necessary to analyze and evaluate feedback of curriculum and assess how they can effectively implement in their job performance.

For this purpose, IQAC of college prepared and distributed questionnaire to respondent on both Google form and manually to 25 employers. These data are analyzed using SPSS (statistical package for social science) and descriptive statistics are used for interpretation.

Apart from that Graph, diagram and descriptive statistical tools like standard deviation, mean are used. Here college using 5 point scale starting from 5 (good) and 1 (very poor)

Institution collecting feedback of employers is follows.

Opinion of employers regarding curriculum and delivery is given in the following table (in percentage)

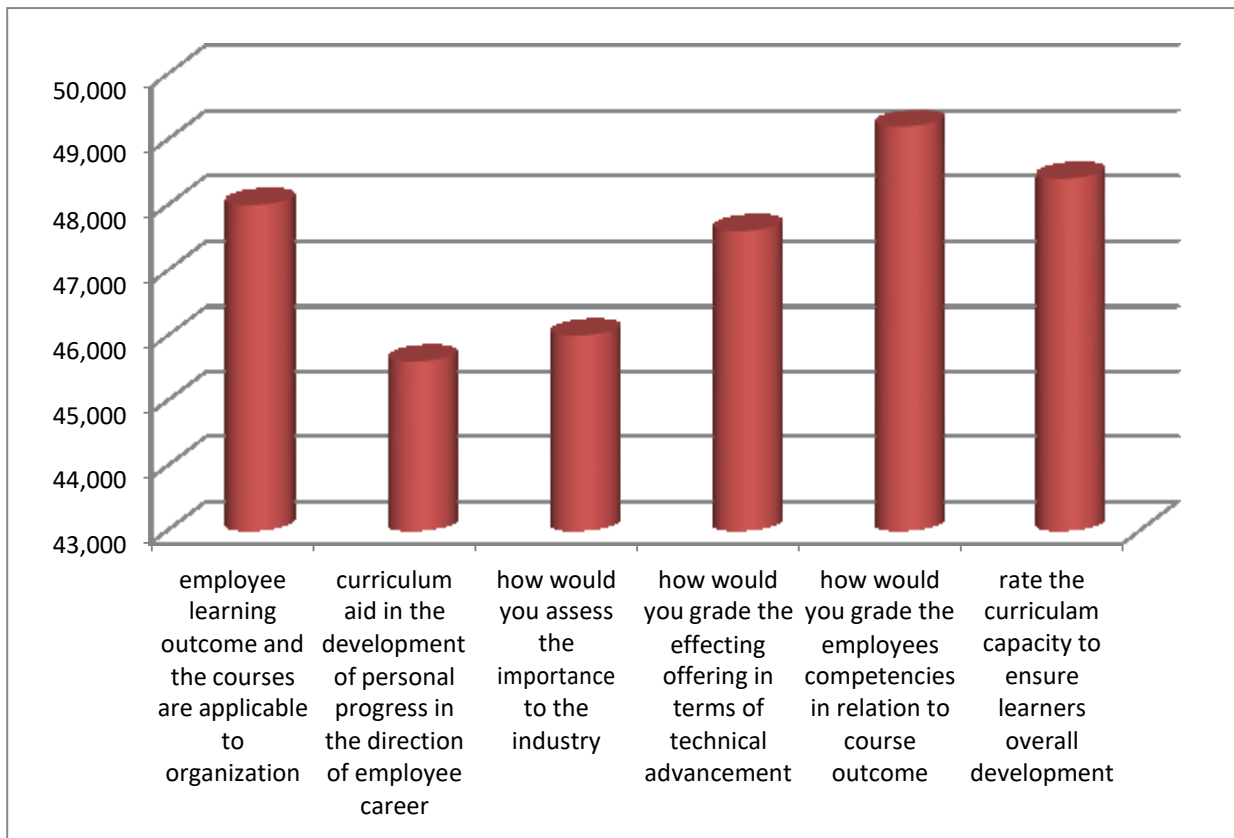
Descriptive Statistics

	N	Minimum	Maximum	Mean	Std. Deviation	Variance
employee learning outcome and the courses are applicable to organization	25	4.00	5.00	4.8000	.40825	.167
curriculum aid in the development of personal progress in the direction of employee career	25	4.00	5.00	4.5600	.50662	.257
how would you assess the importance to the industry	25	4.00	5.00	4.6000	.50000	.250
how would you grade the effecting offering in terms of technical advancement	25	4.00	5.00	4.7600	.43589	.190



SHAHAD BIN ALY
PEN. 468879
Assistant Professor
in charge of **PRINCIPAL**
Ruqyah ul Uloom Arabic College
Riyadh College (RQ) KAFU-4746-673632

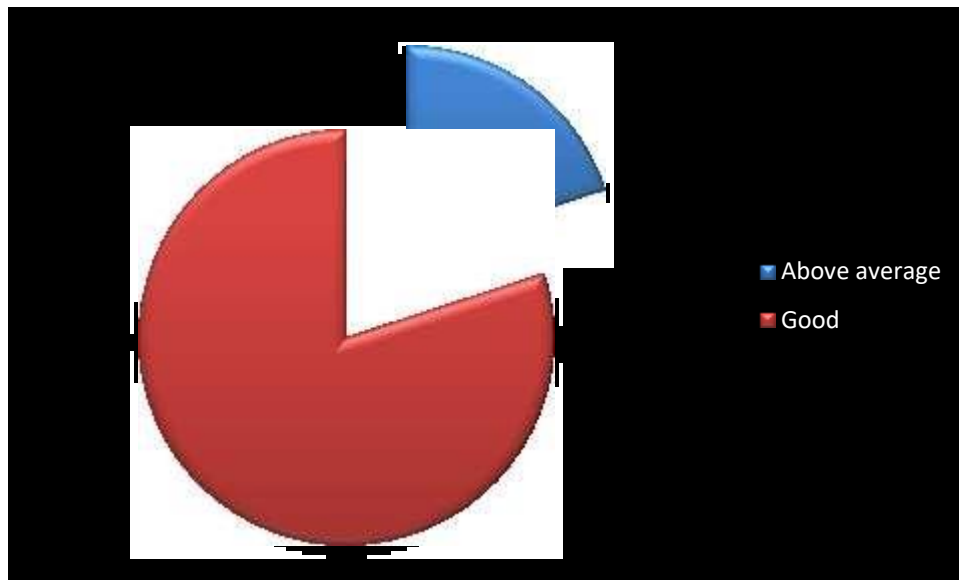
how would you grade the employees competencies in relation to course outcome	25	4.00	5.00	4.9200	.27689	.077
rate the curriculam capacity to ensure learners overall development	25	4.00	5.00	4.8400	.37417	.140
Valid N (listwise)	25					



SHAHAD BIN ALY
 PEN. 468879
 Assistant Professor
 In charge of **PRINCIPAL**
 Reuzathul Uloom Arabic College
 Farook College Rd, Kozhikode-673632

Employee learning outcome and the courses are applicable to organization


		Frequency	Percent	Valid Percent	Cumulative Percent
Valid	Above average	5	20.0	20.0	20.0
	Good	20	80.0	80.0	100.0
	Total	25	100.0	100.0	

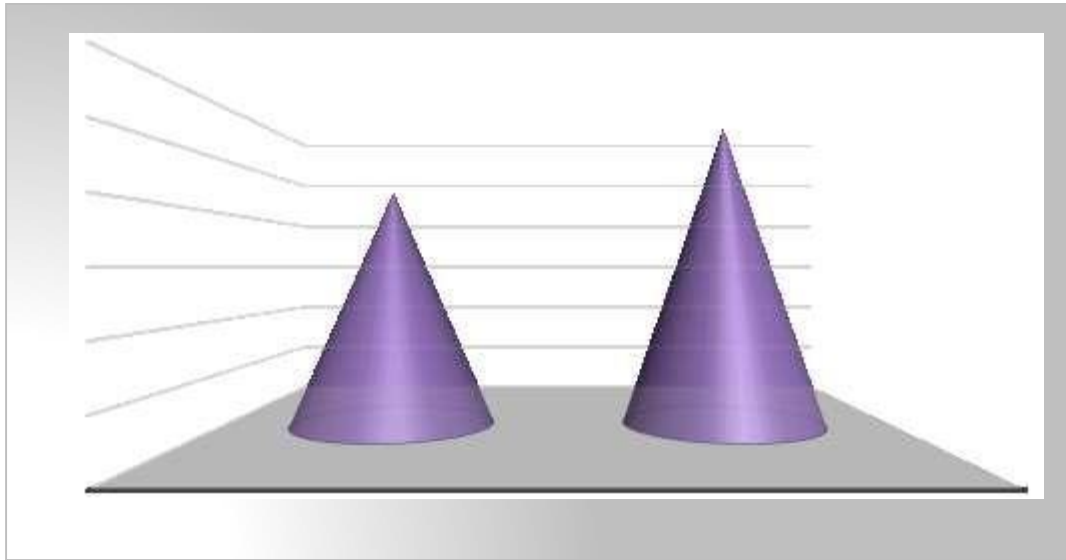


Curriculum aid in the development of personal progress in the direction of employee career

		Frequency	Percent	Valid Percent	Cumulative Percent
Valid	Above average	11	44.0	44.0	44.0
	Good	14	56.0	56.0	100.0
	Total	25	100.0	100.0	

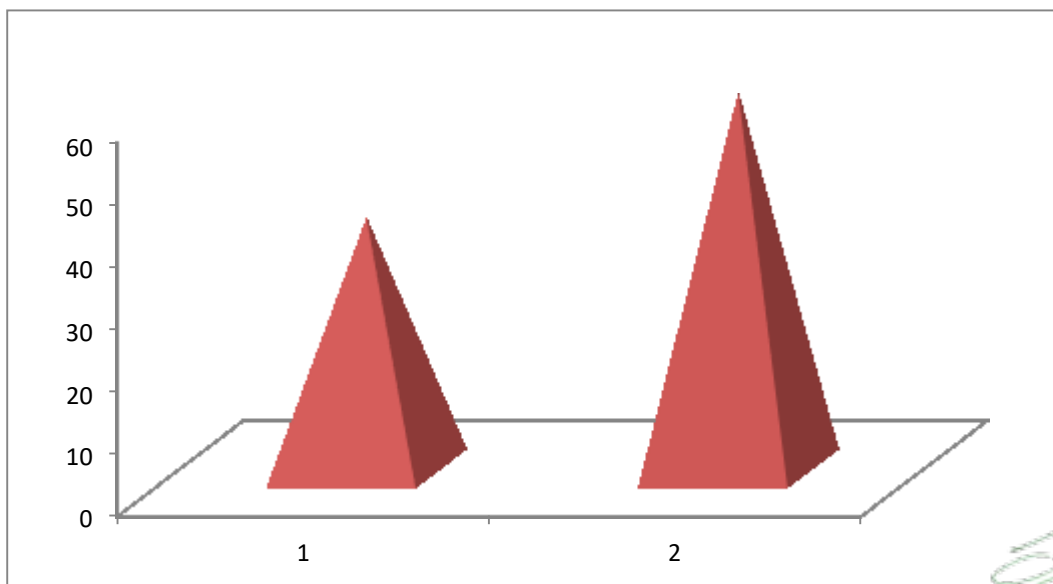



SHAHAD BIN ALY
 PEN. 468879
 Assistant Professor
 In charge of **PRINCIPAL**
 Reuzathul Uloom Arabic College
 Farook College (PO, Kozhikode-673632)



How would you assess the importance to the industry?

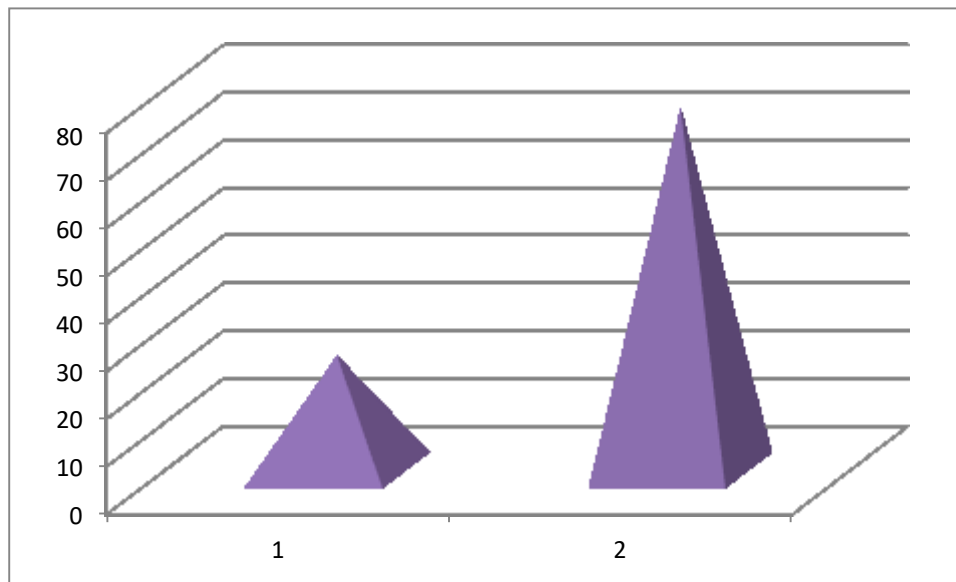
		Frequency	Percent	Valid Percent	Cumulative Percent
Valid	Above average	10	40.0	40.0	40.0
	Good	15	60.0	60.0	100.0
	Total	25	100.0	100.0	




SHAHAD BIN ALY
 PEN. 468879
 Assistant Professor
 In charge of **PRINCIPAL**
 Reuzathul Uloom Arabic College
 Farook College PO, Kozhikode-673632

How would you grade the effecting offering in terms of technical advancement?

		Frequency	Percent	Valid Percent	Cumulative Percent
Valid	Above average	6	24.0	24.0	24.0
	Good	19	76.0	76.0	100.0
	Total	25	100.0	100.0	

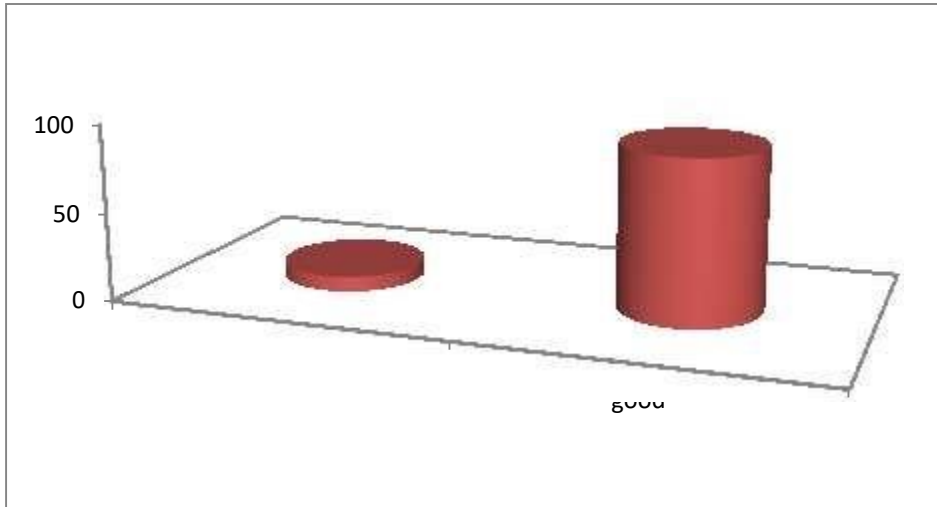


How would you grade the employee's competencies in relation to course outcome?

		Frequency	Percent	Valid Percent	Cumulative Percent
Valid	Above average	2	8.0	8.0	8.0
	Good	23	92.0	92.0	100.0
	Total	25	100.0	100.0	

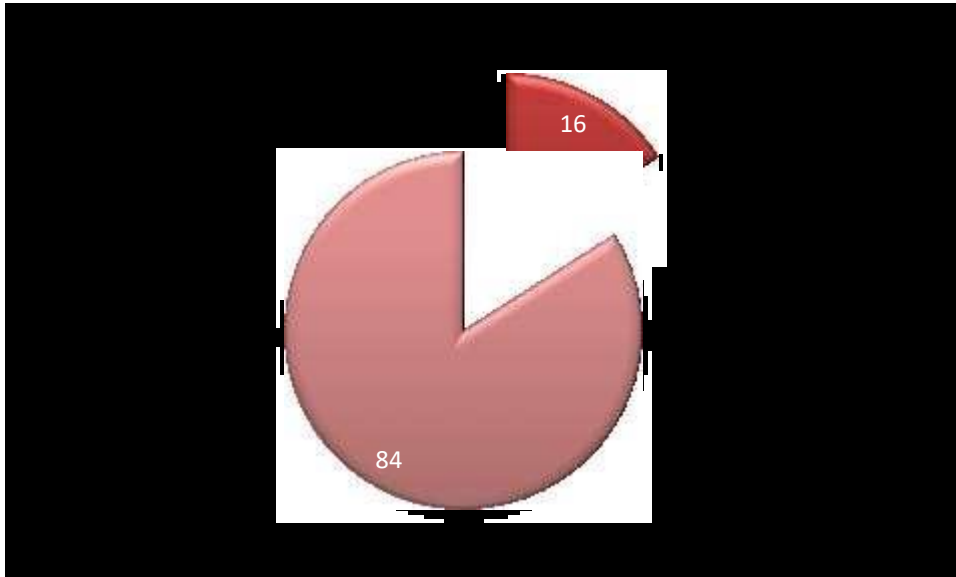


SHAHAD BIN ALY
 PEN. 468879
 Assistant Professor
 In charge of **PRINCIPAL**
 Reuzathul Uloom Arabic College
 Farook College Rd, Kozhikode-673632



Rate the curriculum capacity to ensure learners overall development

		Frequency	Percent	Valid Percent	Cumulative Percent
Valid	Above average	4	16.0	16.0	16.0
	Good	21	84.0	84.0	100.0
	Total	25	100.0	100.0	



Majority of employers are opinion that syllabus is effective in for of job performance



Shahad Bin Aly
SHAHAD BIN ALY
 PEN. 468879
 Assistant Professor
 In charge of **PRINCIPAL**
 Reuzathul Uloom Arabic College
 Farook College RD, Kozhikode-673632